

# Here's How to Make a Difference

Whether you have lived on the island for generations or moved here more recently for the quality of life, it's clear that Bainbridge Island has a strong and unique sense of community. Island residents are able to maintain a high quality of life primarily because of its vibrant nonprofit sector.

We respond to the changes in our community as it grows, and remain flexible in times of need. Through the support of donors at all levels—from \$10 to \$10,000 or more—BCF has been able to award a total of over \$21 million since inception. The impact of the work of our grantees is truly inspiring—and the need for support is only increasing each year. It is never too late to get involved.

When you give through BCF, you become our partner in funding critical efforts to create and maintain a healthy future for the people we love and for the island we call home. Through direct contributions to our work, by opening a Donor Advised Fund, by participating in campaign drives, or by leaving Bainbridge Community Foundation in your will or estate plan, you help maintain Bainbridge Island as a place our children and grandchildren will be proud to call home. Here are some of the specific initiatives you could support.

- **Bainbridge Community Fund:** Gifts to the Bainbridge Community Fund support BCF's programs, grantmaking, and activities, and are allocated at the discretion of the Board of Trustees to the area of greatest need. Gifts of \$1,000 or more to this fund are recognized in the Leadership Circle.
- **Capacity Building Grants Partners:** This special grant program helps nonprofits become more effective by building their capacity to function as stronger, more efficient organizations.
- **Housing Action Fund:** This fund addresses the critical need for affordable housing on Bainbridge Island by supporting both acquisition and bricks-and-mortar housing programs.
- **Community Response Fund:** This fund provides financial resources to nonprofit organizations for urgent health and human service needs in our community, especially during times of economic hardship or human or natural disaster. This fund has and will continue to award grants to local nonprofits that have been affected by COVID-19.
- **Scholarship Funds:** Annual scholarships awarded to graduating Bainbridge seniors pursuing higher education.
- **BCF Endowment Fund:** Gifts to permanent endowed funds ensure there will be ongoing support for our community for generations to come.
- **The Inclusion, Diversity, Equity, Accessibility, and Social Justice (IDEAS) Fund:** The IDEAS Fund is based on the principle that everyone should have equitable access to opportunities, programs, resources, and services—regardless of a person's race, age, gender identity, socioeconomic background, (dis)ability, or country of origin. The IDEAS Fund will help support these requests to BCF Grants Cycles as well as specific initiatives and partnerships that promote the IDEAS principles.
- **Community Grantmaking Partner Fund:** Donations support the Foundation's annual grantmaking program for nonprofit organizations serving the Bainbridge community. Grants are awarded to 501(c)(3) nonprofits doing work in all sectors of the community.



Our work is only made possible through the generous support of donors. **Please feel free to learn more or donate at [www.BainbridgeCF.org](http://www.BainbridgeCF.org).**



**Address:**  
299 Madison Ave. N, Suite B  
Bainbridge Island, WA 98110  
**206.842.0433**  
**[www.BainbridgeCF.org](http://www.BainbridgeCF.org)**



**Staff**

Jim Hopper  
*Executive Director*  
Debbie Kuffel  
*Program & Finance Officer*  
Brigette Yates  
*Development Officer*  
Dana Binnendijk  
*Community Impact Officer*  
Jessica Henshaw  
*Office Administrator*

**Board Members**

Brooke Rufo-Hill  
*President*  
David Harrison  
*Vice President*  
Jason Taylor  
*Treasurer*  
Barbara Swartling  
*Secretary*  
Cris Beattie  
Peter Drury  
Marcia Hastings  
Eileen Hershberg  
Theona Jundanian  
Judy Karr  
Omie Kerr  
Brittany Kirk  
Barbara Magusin  
Vicky Marsing  
David Reynolds-Gooch  
Proctor Schenk  
Aly Vander Stoep  
Hart Williams  
Trese Williamson

# COMMUNITY UPDATE

WINTER 2022



## Foundation Hits Mark of Awarding More Than \$100,000 Through YES Fund to Support Youth

Numerous studies have proven the importance of positive childhood experiences in influencing healthy behavior in early adulthood, while on the other hand, research has also shown that chronic stressful events can disrupt a child's neurodevelopment—leading to challenges with managing negative emotions and potential problems in adulthood.

In 2018, Bainbridge Community Foundation met with local leaders to discuss youth in our community. The organizing question was about how to support youth who otherwise might “fall through the cracks.” These are kids who do not have access to services, whether it is because these services don't exist for them, they don't know how to access services, or they choose not to access services on their own.

Discussions first centered on the many programs that were already in place to support youth with varying degrees of success. **A substantial gap area that was identified was the ability to fund activities that would expose these young people to positive experiences.**

Bainbridge Community Foundation, in partnership with Bainbridge Schools Foundation, Bainbridge Youth Services, and Helpline House, created the Youth Experience Support Fund (YES Fund) to provide financial assistance to local youth. Within four months of forming the YES Fund, donors contributed over \$75,000 to support a three-year pilot program that would provide this essential financial assistance to the next generation.

Funding goes towards students who may not have the resources to meet basic needs, to achieve academic success, or

to pursue extracurricular activities. During the 2020-2021 school year, the YES Fund covered a wide range of needs, such as supporting registration and participation fees for youth sports activities,



“We believe in making it possible for all students to reach their learning potential regardless of their ability to afford the educational opportunities available to them. The YES Fund helps make that possible.”  
– Barbara and Frank Magusin, YES Fund Donors

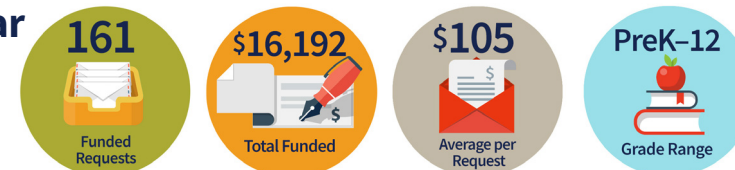
music lessons, dance lessons, skiing, and swimming. Financial assistance was also used for basic needs during the COVID-19 pandemic, and provided electric blankets for kids and sleeping bags for those who needed them. **To date, BCF has awarded over \$100,000 through the YES Fund to support youth in our community.**

When BCF hosted an event focused on youth homeless this past March, a panel discussed the YES Fund and the impact it has on the lives of young people in our community. **It was viewed as such an successful program that Fishline Food Bank & Comprehensive Services created a similar initiative called Student Opportunities & Advancement Resources (SOAR) to provide financial assistance for**

**students (K-12) who reside in Poulsbo, Keyport, Suquamish, and Bangor.** BCF has been incredibly grateful for the opportunity to support youth in our community, and for the hard work of its partners to bring the program to fruition.

BCF will be presenting on the YES Fund at the next BHS Parent Student Teacher Organization (PTSO) Board Meeting, which will be open to the public, starting at 7PM on Tuesday, December 6 at the BHS library. To learn more about the YES Fund, please contact [info@bainbridgecf.org](mailto:info@bainbridgecf.org).

### Academic Year 2020-2021 Funding Summary



Read inside to learn more about the work of your local community foundation.

# Who is Bainbridge Community Foundation?

We are analysts.  
We are connectors.  
We are collaborators.

## 1 We ask the community

We conduct a survey and produce a full analysis on community needs.

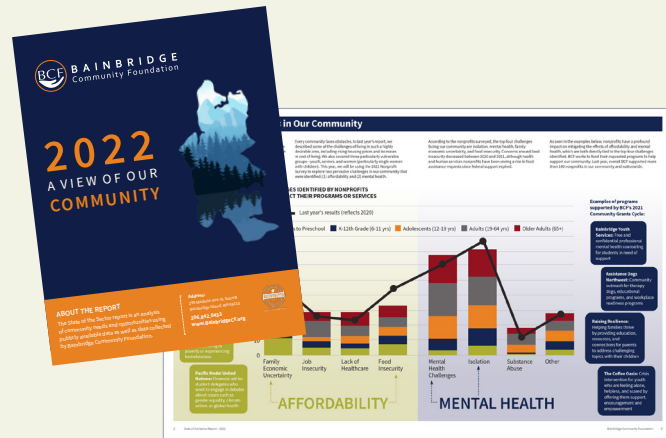
## 2 We respond

**We Grant:** We award grants to local nonprofits to help meet community needs. As of October 2022, BCF has awarded over \$21 million back to the community since inception to support causes such as accessible childcare or free access to counseling or legal services.

**We Create New Ways to Give:** Area of Interest Funds are another way for BCF to ensure a special group of people or a specific cause is supported in our community, such as affordable housing or extracurricular activities for youth who otherwise couldn't afford it. These funds ensure we never miss out on providing help when needed.

**We Connect:** We connect donors and volunteers to nonprofits that support causes they care about.

**We Collaborate:** We work in partnership with other nonprofits to conduct trainings, build capacity, and to make programs accessible to everyone.



## We Can Only Do This Work Together

Give and engage with Bainbridge Community Foundation!

- ▶ **Donor Advised Funds:** Donor Advised Funds are convenient, flexible tools for individuals, families, businesses, or groups who want to be personally involved in suggesting grant awards made possible by their gifts.
- ▶ **Direct donations:** Whether it's unrestricted support to BCF or support for one of our Area of Interest Funds, which target specific unmet needs in our community, you can make a difference.
- ▶ **Volunteering:** Volunteer with BCF or with one of our local nonprofits. Check out the Volunteer on Bainbridge Facebook page or contact us directly at [dana@bainbridgecef.org](mailto:dana@bainbridgecef.org).

For any questions or interest in contributing to BCF, please contact Brigette Yates at [brigette@bainbridgecef.org](mailto:brigette@bainbridgecef.org).

## A Letter of Thanks

To the Bainbridge Community,

Bainbridge Community Foundation is proud to work in partnership with local nonprofits to help meet community needs and enrich the lives of every neighbor. The past few years have been challenging, yet we've seen generous donors, enthusiastic volunteers, and vibrant nonprofits come together and commit to helping us all through this unprecedented time.

BCF's analysis in its 2022 *State of the Sector: A View of the Community* report shows that mental health and affordability in our community will continue to remain a challenge moving forward. Nonprofits in our community will continue to support us in these areas, as they did through the pandemic itself. We are grateful to help support these nonprofits.

BCF is proud to have deepened its commitment to existing initiatives this year, such as its YES Fund (Youth Experience Support Fund) and its focus on IDEAS (Inclusion, Diversity, Equity, Accessibility, and Social Justice). We have also created new ways to honor those who give back, such as the Catalyst Award, which helped double a grant to Bainbridge Youth Services for addressing a critical community need, and the Spark Award, which was created to recognize persons whose actions have inspired others to both give to and serve important community causes. We have also awarded over \$21 million in grants to date for programs that benefit people who live, work, or visit Bainbridge Island.

We are proud to be a part of this community, and look forward to the year ahead. Thank you!

Jim Hopper  
Executive Director



## Is a Donor Advised Fund Right for You?

By now you may have heard of Donor Advised Funds, which is one of the most popular tools for charitable giving on the market today. Here's how they work! A donor opens the fund at BCF with a contribution, which is eligible for an immediate tax deduction. BCF invests the contribution in our low-fee socially-responsible investment pool where the fund grows. Whenever donors are ready, they can recommend grants from the Donor Advised Fund to the charities they prioritize the most. Using a Donor Advised Fund makes tax planning and charitable giving easy. BCF's staff has cumulatively over 82 years of experience to help you get the most out of your investments in the community.

Now is a great time to set up a Donor Advised Fund, especially when using appreciated stock. You get to deduct the full fair market value (up to 30% AGI) of the security, and you don't have to pay income tax on the built-in appreciation. Starting a fund takes a matter of minutes – give BCF a call today!

Now is a great time to set up a Donor Advised Fund, especially when using appreciated stock. You get to deduct the full fair market value (up to 30% AGI) of the security, and you don't have to pay income tax on the built-in appreciation. Starting a fund takes a matter of minutes – give BCF a call today!

